

Product Specification

(LED High Bay Light)

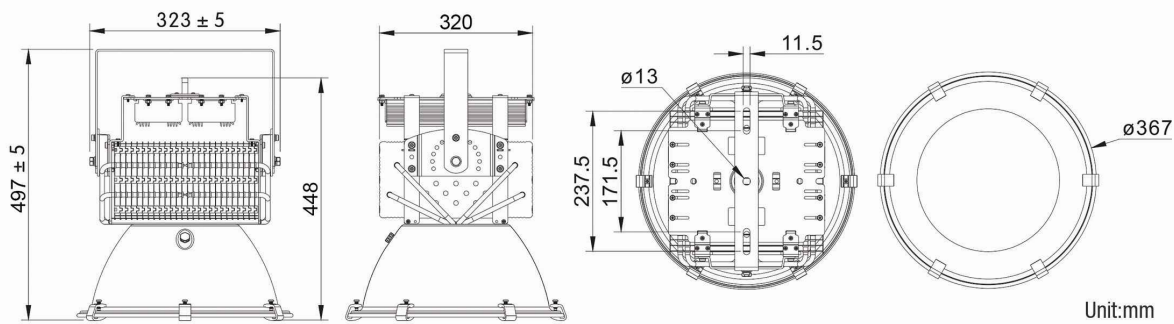


■ C-H300



Application: It be widely used for building outer wall lighting ,square ,station and gymnasium lighting.

Dimension:



Technical Parameters:

| Model | | C-H300 | |
|-----------------------|-------------------|-------------------|----------|
| Product Specification | Lighting Pattern | Back-lit | |
| | Material | AL+Tempered Glass | |
| | LED Type | CREE-XBD | |
| | LED QTY | 196PCS | |
| Electrical Parameters | Power | 300W | |
| | Input Voltage | AC100-270V | |
| | Output Voltage | DC30-34V | |
| | Power Efficiency | 0.97 | |
| | Luminosity | 23748LM±10% | |
| Optical Parameters | Illumination | 10m | 262Lux |
| | | 20m | 65Lux |
| | | 40m | 16Lux |
| | Light Efficiency | | 79.2LM/W |
| | CRI | | Ra≥75.0 |
| | Color Temperature | 2700-3500K | |
| | | 4000-4500K | |
| | | 5700-6500K | |
| Package | Beam Angle | | >6500K |
| | | | 57° |
| | Package Size(mm) | 475*475*510mm | |
| | Qty of Package | 1PCS | |
| | Piece Weight(Kg) | 10.62 | |
| | Net Weight(Kg) | 10.62 | |
| | Gross Weight(Kg) | 13.12 | |
| Lamp Type | | III | |
| Installation | | Bare | |
| IP Rate | | IP65 | |
| Lifespan | | 50,000h | |
| Working Temperature | | -25℃~50℃ | |

Thermal Image Testing Report:

File: IR000406. BMT

Date: 2012-12-22

Lens Type: nomal 30°

Scene: 20313238

Test Time: 16:46:54

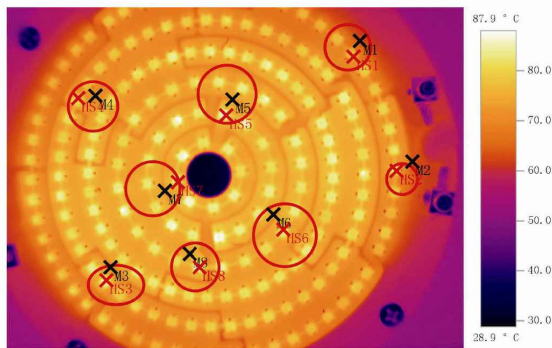


Image Parameter:

Radiance: 0.95

Reflect Temp [° C]: 20.0

Image Tag:

| Test Object | Temp. [° C] | Radiance | Reflect Temp. [° C] | Remarks |
|----------------|-------------|----------|---------------------|---------|
| Test point M 1 | 63.5 | 0.95 | 26.0 | MC PCB |
| Test point M 2 | 63.4 | 0.95 | 26.0 | MC PCB |
| Test point M 3 | 70.3 | 0.95 | 26.0 | MC PCB |
| Test point M 4 | 70.9 | 0.95 | 26.0 | MC PCB |
| Test point M 5 | 71.9 | 0.95 | 26.0 | MC PCB |
| Test point M 6 | 73.6 | 0.95 | 26.0 | MC PCB |
| Test point M 7 | 72.7 | 0.95 | 26.0 | MC PCB |
| Test point M 8 | 74.3 | 0.95 | 26.0 | MC PCB |
| Hot Spot HS 1 | 77.3 | 0.95 | 26.0 | LED |
| Hot Spot HS 2 | 87.2 | 0.95 | 26.0 | LED |
| Hot Spot HS 3 | 86.4 | 0.95 | 26.0 | LED |
| Hot Spot HS 4 | 81.5 | 0.95 | 26.0 | LED |
| Hot Spot HS 5 | 86.4 | 0.95 | 26.0 | LED |
| Hot Spot HS 6 | 83.9 | 0.95 | 26.0 | LED |
| Hot Spot HS 7 | 84.0 | 0.95 | 26.0 | LED |
| Hot Spot HS 8 | 87.3 | 0.95 | 26.0 | LED |

Remarks:

Indoor temperature : 20℃

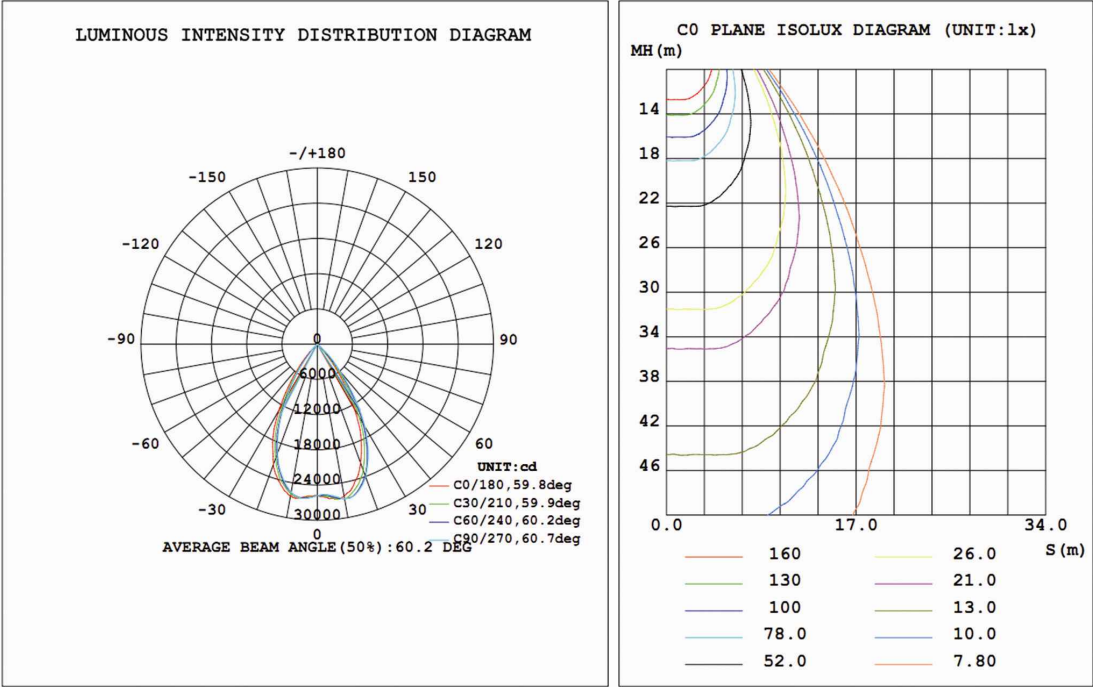
Testing period :2 Hours

Input power:299W, 228V\1.3A\0.994PF

Input Voltage : 220V

LED: XBD, 192PCS, One LED 1.56W

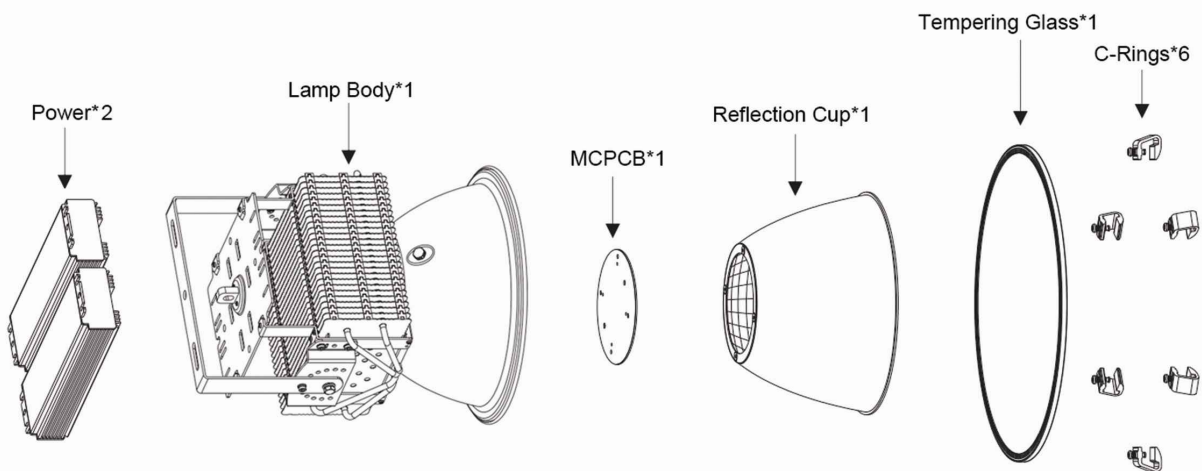
Test Report:



Features:



Structural Drawing:



Packing Instruction:

